





POETIC DWELLING ABOUT YOURSELF
ABOUT YOUR FAMILY AND WHAT TIME LOOKS LIKE
INTEGRATION OF LIGHT AND SHADOW
COLOR, BLOCK STRUCTURE AND OTHER DESIGN
TECHNIQUES MAXIMIZE THE RELEASE
OF SPACE MASS INTO THE SPACE THE SUN JUMPS
WANT ONLY AND COMBINES ELEGANTLY
IT HAS BOTH STRETCH AND COMFORTABLE EXPERIENCE
FOLLOWING THE LIGHT THE
PICTURES OF LIFE UNFOLD ONE AFTER ANOTHER



REPRESENTS THE HOLOGRAPHIC PERCEPTION OF BEAUTY" AND
THE BOLD PURSUIT OF BEAUTY" WITH THE OPEN AND INCLUSIVE
DESIGN AESTHETICS IN THE CONTEMPORARY CONTEXT. MEASURES
THE ULTIMATE QUALITY BY THE YARDSTICK OF LIFE.

代表着对“美”的全息感知，对“美”的大胆追求。墨以当代
语境下开放包容的设计美学，以生活的尺度丈量出极致品质的标
准。以现代主义设计手法将传世匠心重新演绎为可感知。



WITH THE OPEN AND INCLUSIVE
DESIGN AESTHETICS IN THE CONTEMPORARY CONTEXT



UM-LS01



UM-LC02



UM-LT02·大茶几

UM-LT03·中茶几

UM-LCT02·高脚几



BU LDANEW STRUCTURALFORMUNDE
R THE NHERITANCE OF SPIRIT



WITH THE OPEN AND INCLUSIVE
DESIGN AESTHETICS IN THE CONTEMPORARY CONTEXT



INTEGRATION OF LIGHT AND
SHADOW COLOR



WITH THE OPEN AND INCLUSIVE
DESIGN AESTHETICS IN THE CONTEMPORARY CONTEXT





UM-LC02





TRACING BACK TO THE ORIGIN OF
THE MAGEN THE SHAPING



UM-LCT02 UM-LT02 UM-LT03



造物的理,与待人的礼相通, 皆关乎尺度的把握。家具的尺度不仅在于高矮长短、宽窄厚薄, 亦映射着生活中处事接物的分寸理解。端坐的体态、躬身的幅度、主宾的次序、相持的距离——礼节经由理性的设计调和,

ETQUETTE IS RECONCILED THROUGH RATIONAL DESIGN TO
ACHIEVE APPROPRIATE RESTRAINT AND REASONABLE
COMPATIBILITY ON TOP OF PRODUCTS



LS02



LC01

LT01

LCT01

The principles of creation and the etiquette of treating people are related to the grasp of scale.



Etiquette is balanced through rational design, achieving appropriate restraint and rational compatibility on top of U-ink products

LS02







LS02XL



THE WARMTH OF WOOD, THE FORTITUDE OF
METAL AND THE DELICACY OF LEATHER REFLECT

LS02XL



Based on the present and knowledgeable in the East, draws inspiration from Chinese millennial philosophical ideas, and embodies contemporary international aesthetic interests. With modernist design techniques and superb craftsmanship

THEIR LOVE OF NATURAL LIFE FROM THE MATERIAL





BUILD A NEW STRUCTURAL FORM UNDER
THE INHERITANCE OF SPIRIT

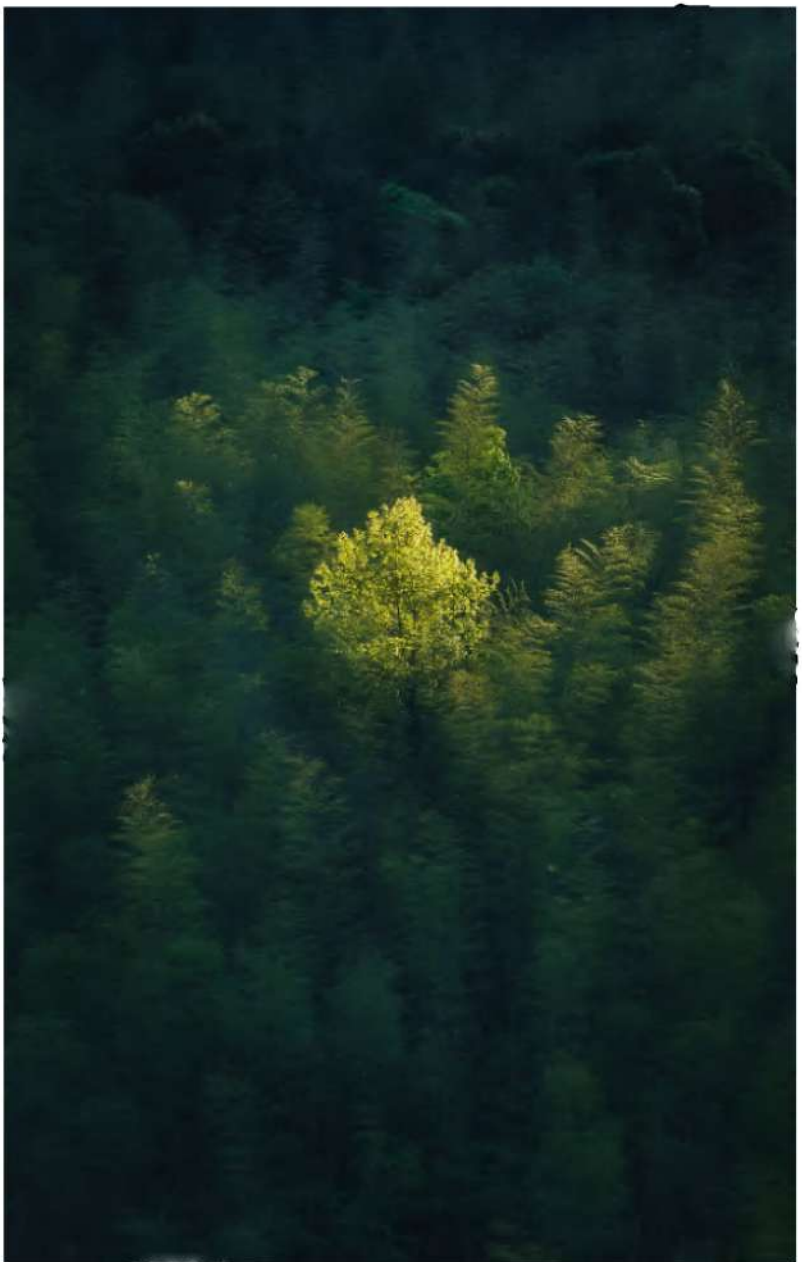


Through its understanding of Italian aesthetics and Eastern culture, U-ink engages in parallel dialogue with current design aesthetics.

Etiquette is balanced through rational design,
achieving appropriate restraint and rational
compatibility on top of U-ink products



ETRUETTE'S RECONCILED THROUGH RATIONAL
DESIGN TOUCH WITH APPROPRIATE RESISTANT AND
REASONABLE COMPATIBLE WITH NYON TOPOFUO
PRODUCTS



The warmth of wood, the toughness of metal,
and the delicacy of leather. Reflect the spiritual
level of Chinese people and their love for natural
life through materials.

LC01



The warmth of wood, the toughness of metal



LC01



我们深受创造的渴望所驱动，对于工匠精神深感着迷。将对意式美学的热烈与东方文化的内敛与秀美形成独有的、东西相融的生活艺术和极致意境。





Through its understanding of Italian aesthetics and Eastern culture



Through its understanding of Italian aesthetics and Eastern culture, engages in parallel dialogue with current design aesthetics.



Building new structural forms under the inheritance of spirit and tracing the origin of imagery in shaping.





AND RETAIN THE
CONTEMPORARY INTERNATIONAL
AESTHETIC INTEREST

LINK WITH SUCH GOODWILL DESIGN AND QUALITY SO
THAT THE BEAUTY OF EACH PIECE OF FURNITURE
HAS THE TEMPERATURE





The warmth of wood, the
toughness of metal,
and the delicacy of leather.
Reflect the spiritual
level of Chinese people and their
love for natural life through
materials

TRACING BACK TO THE ORIGIN OF
THE MAGE THE SHAPING





REPRESENTS THE HOLOGRAPHIC
PERCEPTION OF BEAUTY" AND THE
BOLD PURSUIT OF BEAUTY.



LT01

LCT01



THE PEACE AND SECURITY
COMES FROM EVERY PIECE OF FURNITURE



ETIQUETTE RECONCILED THROUGH RATIONAL
DESIGN TOUCH EVERY APPROPRIATE RESTAURANT AND
REASONABLE COMPATIBLE WITH TOP OF THE
PRODUCTS



Building new structural forms under the inheritance of spirit and tracing the origin of imagery in shaping.





The warmth of wood, the
toughness of metal,
and the delicacy of leather.
Reflect the spiritual
level of Chinese people and their
love for natural life through
materials.





TRACING BACK TO THE ORIGIN OF
THE MAGE THE SHAPING





Based on the present and knowledgeable in the East, draws inspiration from Chinese millennial philosophical ideas, and embodies contemporary international aesthetic interests. With modernist design techniques and superb craftsmanship

Building new structural forms under the inheritance of spirit and tracing the origin of imagery in shaping.



TRACING BACK TO THE ORIGIN OF
THEM AGAIN THE SHAPING





AND RETAIN THE
CONTEMPORARY INTERNATIONAL
AESTHETIC INTEREST

THE PEACE AND SECURITY
COMES FROM EVERY PIECE OF FURNITURE





THE LOVE OF NATURAL LIFE FROM THE MATERIAL

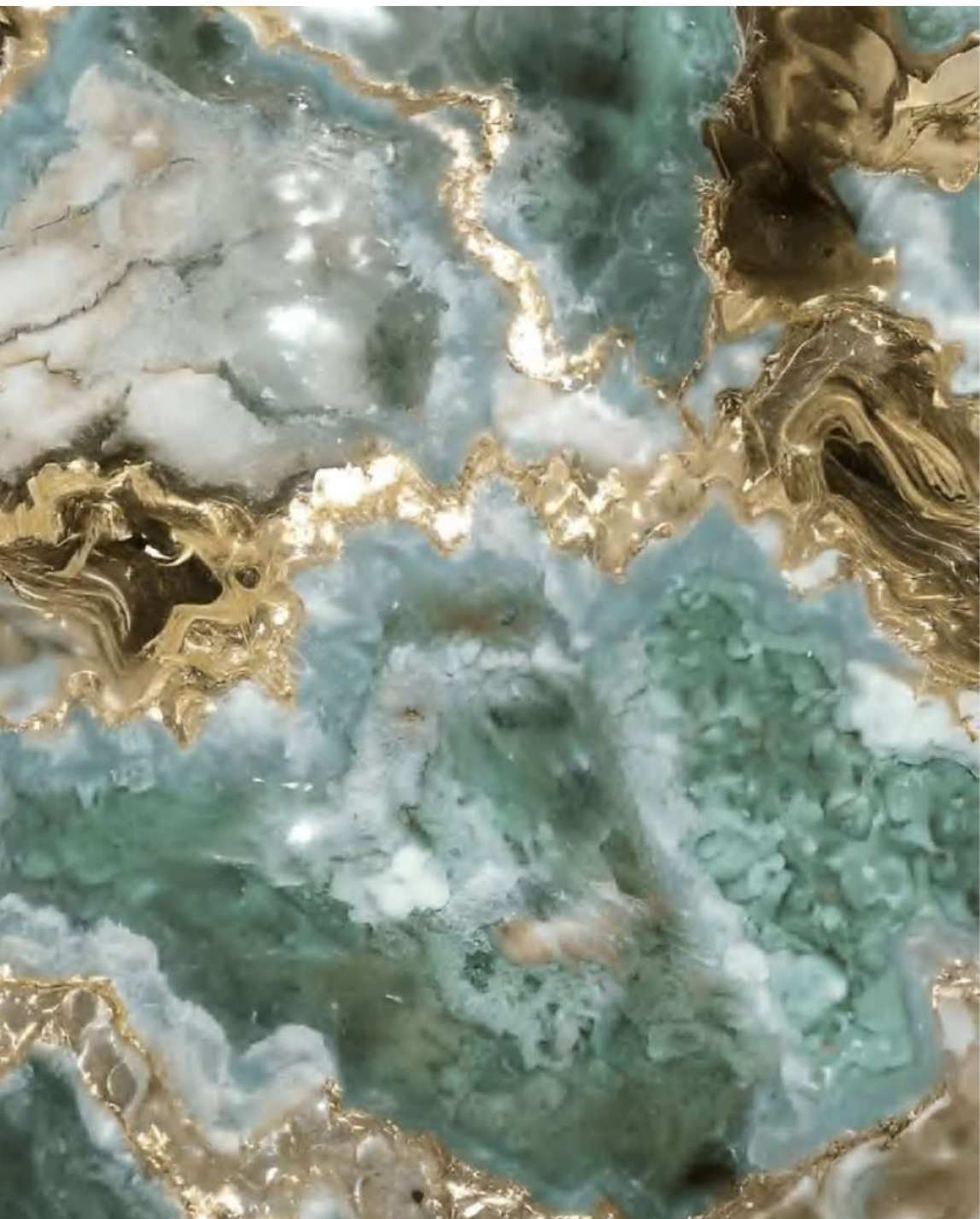


REFINED IN THE
INSIDE NEVER PUBLICIZED IS THE INGENUITY
AFTER THE
INSIGHT OF LIFE BUILDS THE HOME WITH LOVE,
CONVEYS CONCRETELY.



The warmth of wood, the toughness of metal, and the delicacy of leather. Reflect the spiritual level of these people and their love for natural life through materials.





TRACING BACK TO THE ORIGIN OF
THE MAGE IN THE SHAPING



THE PEACE AND SECURITY
COMES FROM EVERY PIECE OF FURNITURE



Through its understanding of Italian aesthetics and Eastern culture, U-ink engages in parallel dialogue with current design aesthetics.



Building new structural forms under the inheritance of spirit and tracing the origin of imagery in shaping.





餐桌椅及櫥柜系列

ELEGANCE IS A KIND OF TASTE, LUXURY
IS A CHOICE TENDERNESS IN DELICACY. SERENITY IN
IDEAL IT'S ALL A DREAM IN LIFE
CONNECT FANTASY WITH REALITY CONSTANTLY THINKING
ABOUT LIFE AND EXPLORING BEAUTY
IN THE DESIGN BOUNDARY, TRANSCENDING
LIMITATIONS AND SHACKLES
AND AWAKENING PEOPLES PRIMITIVE DESIRES



ORIENTAL AESTHETICS



DT01

内敛、诗性的东方美学，中和、礼善的人文精神，从根源处影响着U墨的设计表达。U墨透过对意式美学与东方文化的理解，与当下设计审美平行对话。在精神的传承下搭建新的结构形态，于塑造中回溯意象的源流。



DC01



CC02



BASED ON THE PRESENT ATTAINMENTS OF THE
EAST LEARN FROM THE CHINESE PHILOSOPHY OF THE
MILLENNIUM

DT01

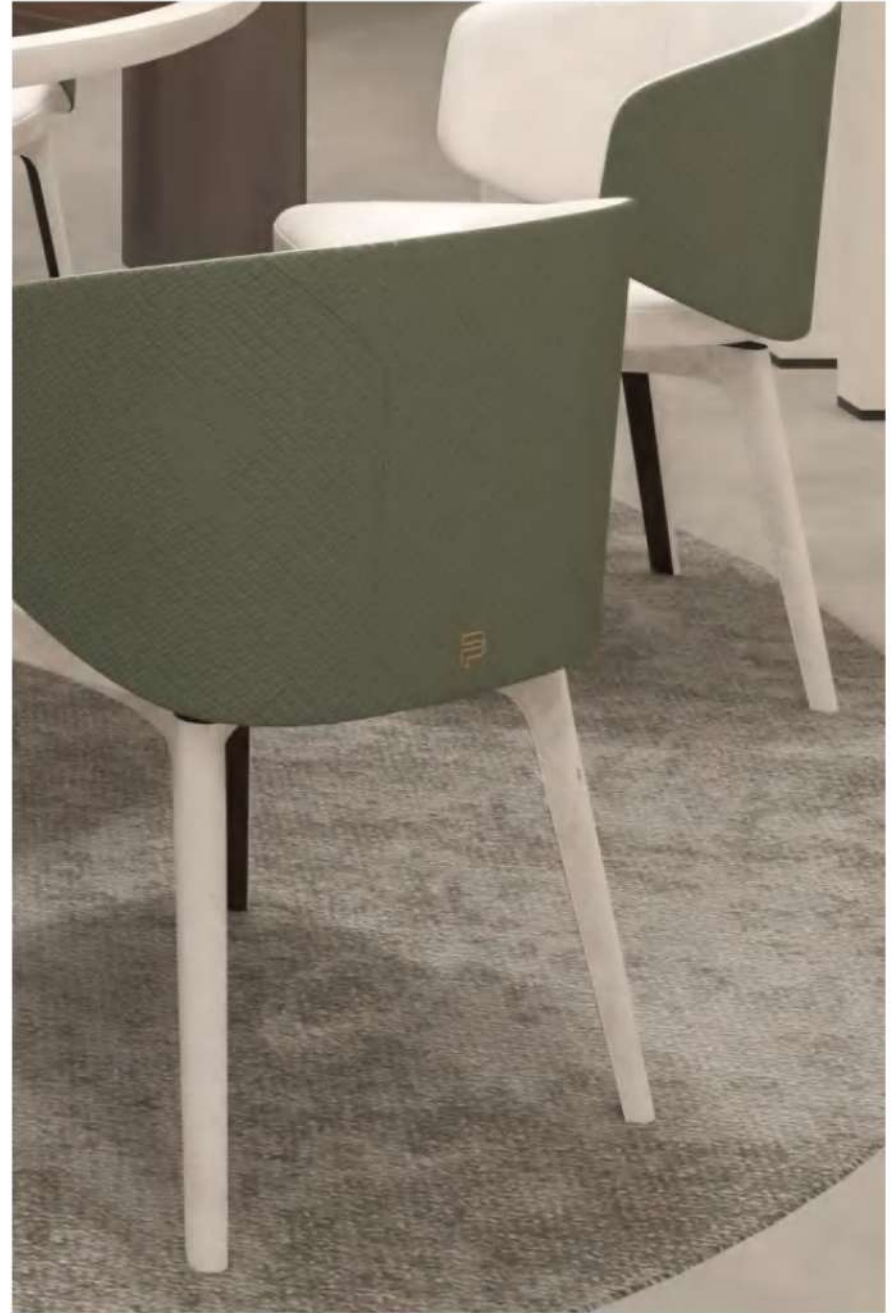




DC01



AND RETAIN THE
CONTEMPORARY INTERNATIONAL AESTHETIC INTEREST





CC02



UNKNOW WITH SUCH GOOD WILL DESIGN AND
QUALITY SO THAT THE
BEAUTY OF EACH PIECE OF FURNITURE
HAS THE TEMPERATURE.



Building new structural forms under the
inheritance of spirit and tracing the origin of imagery
in shaping.





THE INTERNATIONAL EAST LIES IN THE CONVERGENCE THE
ORIENTAL FEELINGS IN THE HEART, REFINED IN THE
INSIDE NEVER PUBLICIZED IS THE INGENUITY AFTER THE
INSIGHT OF LIFE BUILDS THE HOME WITH LOVE, CONVEYS
CONCRETELY.

国际东方在于敛，骨子里的东方情怀，精修于内，
从不张扬，是生活洞察后的匠心体现，以爱筑家，
具象传达。因为懂得东方的贵，弛有度，
有风有骨，东方之美，向来如此。

DT02L



BECAUSE HE UNDERSTANDS THE VALUE
OF THE EAST HE HAS A DEGREE OF
RELAXATION



CC01



DC02





DT02L

THE INGENUITY AFTER THE INSIGHT OF
LIFE BUILDS THE HOME WITH LOVE





With wood and bones, the
beauty of the East

DC02





Through its understanding of Italian aesthetics and Eastern culture, U-ink engages in parallel dialogue with current design aesthetics.



Building new structural forms under the inheritance of spirit and tracing the origin of imagery in shaping.





BECAUSE HE UNDERSTANDS THE
VALUE OF THE EAST HE
HAS A DEGREE OF
RELAXATION



CC01



Refresh with it and never show off







REFINED IN THE
WAYS DENEVER PUBLICIZED IS THE GENUINITY
AFTER THE
INSIGHT OF LIFE BUILDS THE HOME WITH LOVE,
CONVEYS CONCRETELY.



engages in parallel dialogue with current design aesthetics. Building new structural forms under the inheritance of spirit and tracing the origin of its agency in shaping



U N N R T H U S I C H G O O D E K I D S K A N N Q U A L I T Ä T S O T H A T T H E
B E A U T I F U L L E S I C H E R F Ü R N U R E
H A S T E M P E R A T U R E

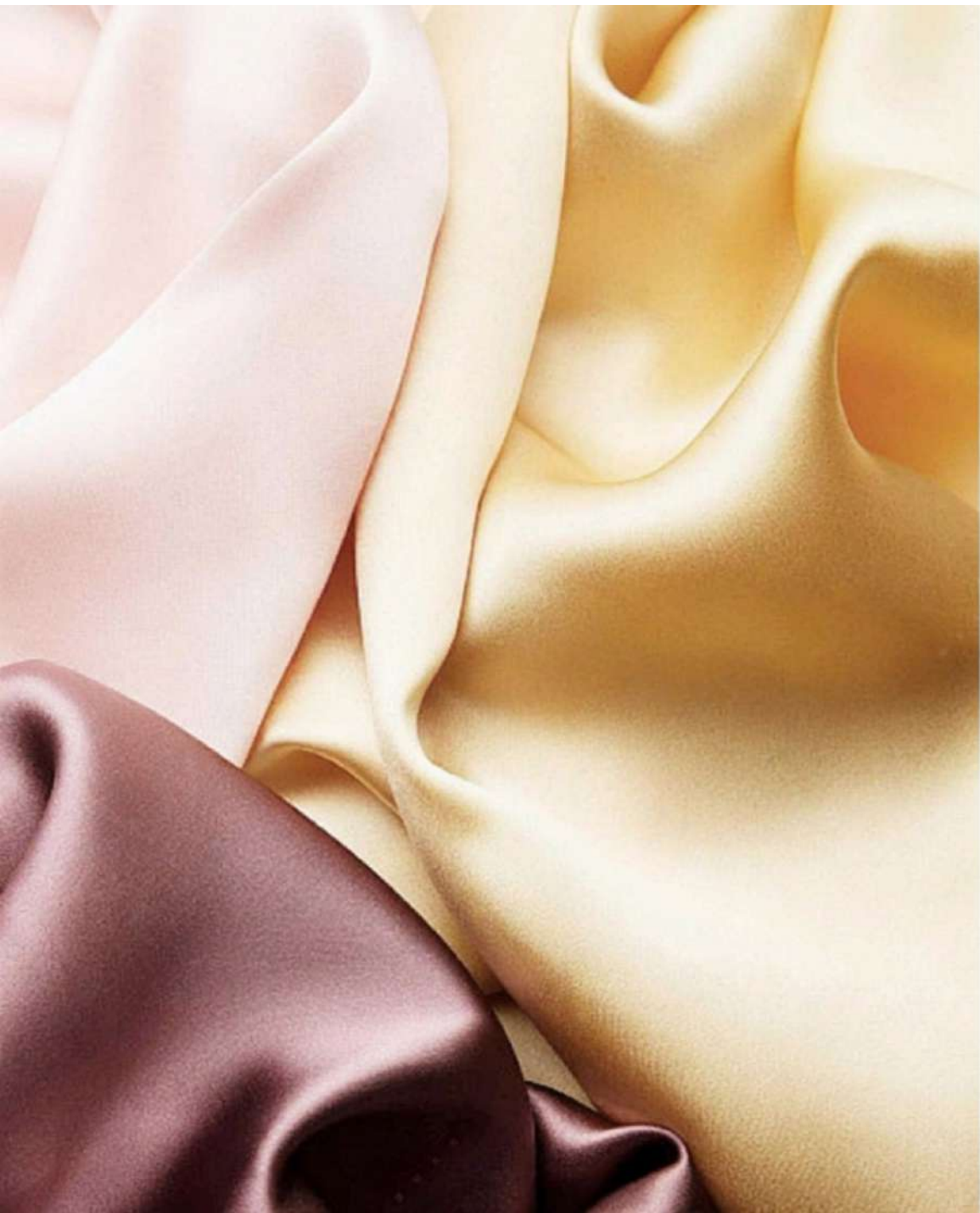


W I T H T H E O P E N A N D I N C L U S I V E
D E S I G N A E S T H E T I C S I N T H E C O N T E M P O R A R Y C O N T E X T



THE INTERNATIONAL EAST LIES IN THE
CONVERGENCE OF THE ORIENTAL FEELINGS IN THE
HEART, REFINED IN





床、床头柜、梳妆台 系列

WARMTH AND COMFORT IS THE ULTIMATE
GOAL OF BEDROOM CONSTRUCTION. SOFT
AND BEA-

UTIFUL BEDDING, CARPET LIGHTING AND
OTHER ELEMENTS, BOTH MEET THE
DEMAND OF HIGH-QUALITY LIVING
EXPERIENCE.

IT ALSO SHOWS THE CLASSIC AND
LASTING EFFECT OF HOME DECORATION.

WE TRAVEL THROUGH TIME HAVE A
VARIETY OF PERSONALITIES AND FEELINGS AND ACT



U墨的平和安稳来自每一件家具作品，沙发与座椅桌几或卧房，它们同频的气息在空间中流转连接构成宁静的场域。U墨的[静]即在于[阒]的营造触及其一可见做知著，步入其中则身临谧境，与浮嚣喧哗相异而包容，隔离但共存。

THE PEACE AND STABILITY OF UMO COMES FROM EVERY PIECE OF FURNITURE, SO FAIR AND SEAT TABLE OR BEDROOM, WHICH ARE CONNECTED



BB01



BT01



BS01



BS02



BD01



BB01



THE BREATH OF THE
SAME FREQUENCY FLOWS AND
CONNECTS IN SPACE
FORMING A QUIET FIELD



IN THE OPEN AND IN CLOSE
DESIGN ASPECTS IN THE CONTEMPORARY CONTEXT

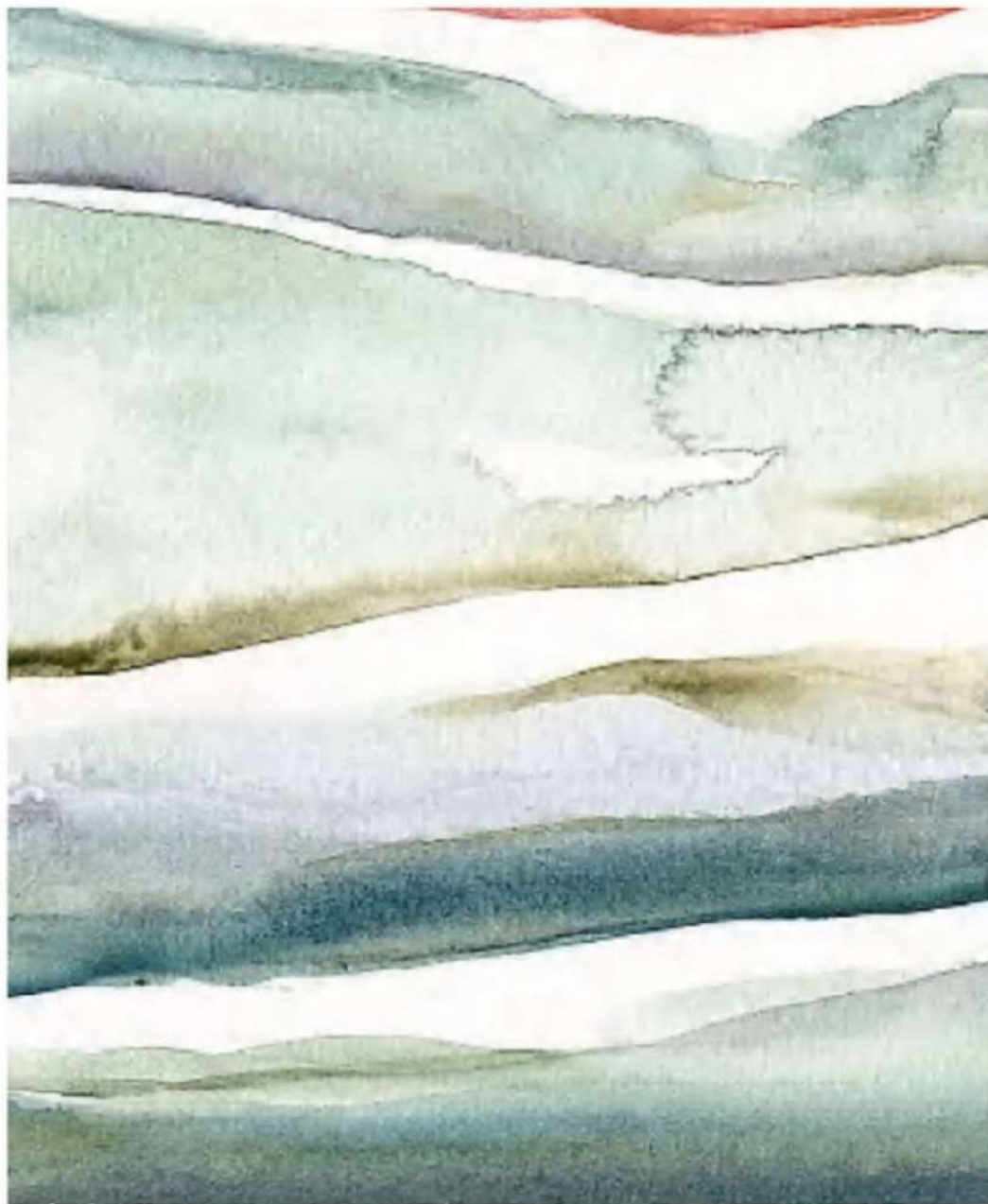


BT01



THE PEACE AND SECURITY
COMES FROM EVERY PIECE OF FURNITURE.





THE PEACE AND
SECURITY
COMES FROM
VERY PRICE OF
FURNITURE



8502



8501



NOT ONLY CAN PROPERLY ACCOMPANY
THE DAILY LIFE BUT ALSO BEARS THE
WEIGHT OF EMOTION



BS01

THE PEACE AND STABILITY COMES FROM
EVERY PIECE OF FURNITURE, SOFA AND SEAT
TABLE OR BEDROOM, WHICH ARE CONNECTED
WITH THE SAME FREQUENCY IN
THE SPACE FORMING A TRANQUIL FIELD





U墨的平和安稳来自每一件家具作品，沙发与座椅桌几或卧房，它们同频的气息在空间中流转连接构成宁静的场域。

The peace and stability come from every piece of furniture, such as sofas, chairs, tables, or bedrooms. Their same frequency of breath flows and connects in the space, forming a peaceful field.



圆的[静]即在于[境]的营造。触及其一可见微知著，步入其中则身临谧境，与浮躁喧哗相异而包容，隔离但共存



The ir same frequency of breath flows and connects in the space





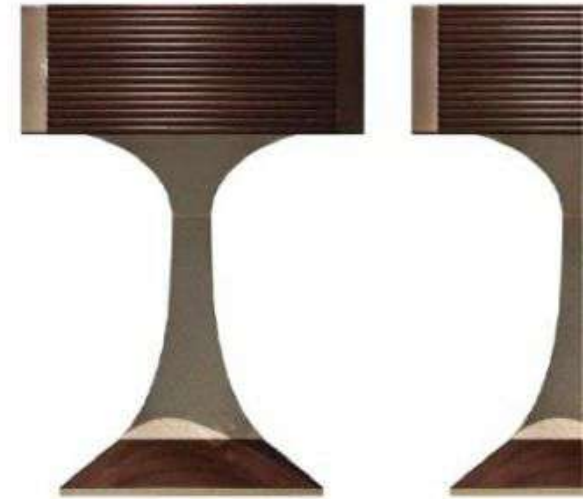


The introverted and poetic Eastern aesthetics, as well as the humanistic spirit of harmony and propriety, have fundamentally influenced the design expression.



The principles of creation and the etiquette of treating people are related to the grasp of scale.

Through rational design and coordination, etiquette achieves appropriate restraint and reasonable compatibility on top of ink products.



The scale of furniture not only lies in its height, length, width, thickness, but also reflects the understanding of propriety in daily life: the posture of sitting upright, the range of bowing, the order of guests, and the distance of holding each other.



THE PEACE AND SECURITY
COMES FROM EVERY PIECE OF FURNITURE

IN THE OPEN AND HIGHLIGHT
DESIGN AESTHETICS IN THE CONTEMPORARY CONTEXT





The peace and stability come from every piece of furniture, such as sofas, chairs, tables, or bedrooms. Their same frequency of breath flows and connects in the space, forming a peaceful field.

置的平和安稳来自每一件家具作品，沙发与座椅、桌几或卧房，它们同频的气息在空间中流转连接，构成宁静的场域。

The tranquility lies in the creation
of the environment.



Touching one of them reveals a subtle understanding,
and entering it brings one to a tranquil realm, which is
different from the restless and noisy world but to learn,
isolated but coexisting.

Chinese people, there is also a consideration of human emotions



In addition to the functional requirements of constructing emotional and cultural totems that carry the common memory of the



Time is boundless, but it can bear the burden.





There is also a
consideration of human emotions

CONSTRUCT AND CARRY THE COMMON
MEMORY OF THE CHINESE PEOPLE





Touching one of them reveals a subtle understanding, and entering it brings one to a tranquil realm.



The peace and stability come from every piece of furniture, such as sofas, chairs, tables, or bedrooms. Their same frequency of breath flows and connects in the space, forming a peaceful field.

The scale of furniture not only lies in its height, length, width, thickness, but also reflects the understanding of propriety in daily life.



The tranquility lies in the creation of the environment.





Based on the present and knowledgeable in the East draws inspiration from Chinese traditional philosophical ideas, and embodies contemporary international aesthetic interests.





With modernist design techniques and superb craftsmanship, creates a natural and comfortable environment, reinterpreting the legendary craftsmanship in to the contemporary international aesthetic space.





The openness and richness of the new era have added Chinese history and culture a new spiritual interpretation. When returning to the East, become a common sentiment among today's high net worth people





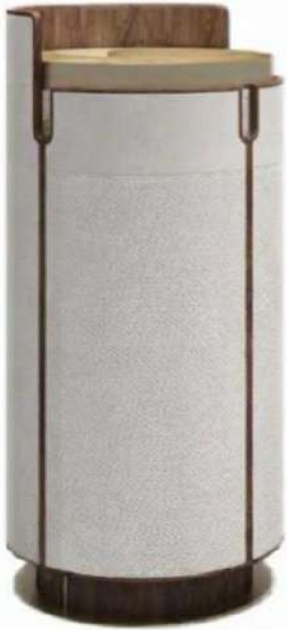
当诗意与奢雅相遇，碰撞出东方与西方的交融
一切皆是生活给予的不同答案



On the summit of a high mountain, one can only see the surging sea
Above the peaks, one feels the vastness of the long wind



Make a little effort to shine and find confidence in areas you like and excel in



After experiencing the beauty of heaven, everything in the world becomes difficult.

Those who do not seek change will succeed, and those who do not seek refuge will enter.





In addition to the functional requirements of constructing emotional and cultural tensions that carry the common memory of the



Refine with in and never show off



Human life is destined to suffer, but we must seek happiness, even if it is just lightning and flint, because happiness is the scattered stars shining on the sinking earth.

关上门，这里仿佛变成了另一个世界不同于白天的喧嚣与忙碌，卧室里静谧而舒适柔软的床铺，舒适的灯光，与时间无声地慢慢流逝。



With modern design techniques and superb craftsmanship, creates a natural and comfortable environment, reinterpreting the legendary craftsmanship into the contemporary international aesthetic space.

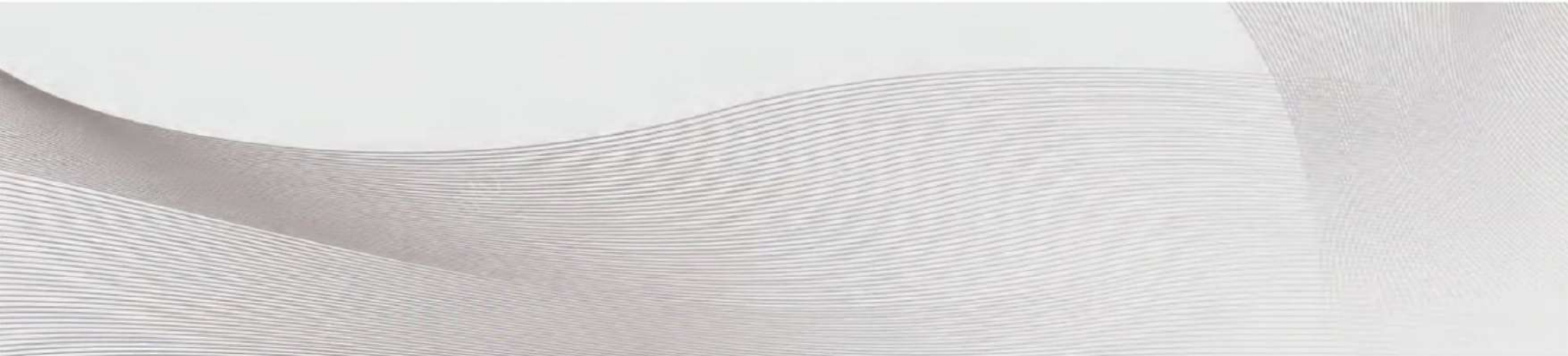




If light, this warm color always gives people peace of mind. It is the reason why we long to go home and the best refuge for us after exhaustion.



The process of realizing dreams is never easy. You need to defeat a lot of confusion, grievances, laziness, and weakness. You may need to give yourself encouragement and control the self that wants to retreat at any time.





The warmth of wood, the
toughness of metal
and the delicacy of leather.
Reflect the spiritual
level of Chinese people and their
love for natural life through
materials



TRACING BACK TO THE ORIGIN OF
THEM AGAIN THE SHAPING



it is just lighting and flit, because happiness is the scattered stars



办公桌椅、书柜
茶桌、娱乐系列

BRING UP THE MAGNIFICENT AND EXQUISITE
PRODUCTS AND FULLY EXPLAIN THE
EXTRAORDINARY THROUGH THE
CAREFUL CARVING OF EVERY DETAIL. EVERY PIECE
OF FURNITURE IN THE HOUSE SHOWS A SENSE OF
RHYME AND LUXURY, SO THAT EVERY SPACE HAS
THE SAME STYLE
JUST TO FORESEE THE LUXURIOUS HOUSE OF
THE FUTURE.



木质的温润、金属的坚毅、皮革的细腻，
从材料体现国人的精神层面，以及体现对
自然生活的热爱。

THE WARMTH OF WOOD, THE FORTITUDE OF METAL AND THE DELICACY OF
LEATHER REFLECT THE SPIRIT OF CHINESE PEOPLE AND THEIR LOVE
OF NATURAL LIFE FROM THE MATERIAL

W T01

GIVING PEOPLE A SENSE OF
RELAXATION SPIRITUAL SO JOURN.



BC01



W S01



PLACED IN AN ORDERLY MANNER, IT IS ASYMMETRICAL
ORDER OF ETIQUETTE BELISHED WITH A
BALANCED SENSE OF BEAUTY GIVING PEOPLE A SENSE
OF RELAXATION SPIRITUAL SO JOURN.



人与物的关系，并不限于功能的利用、美感的读取，还饱含着对生活的理解与情感

W T01



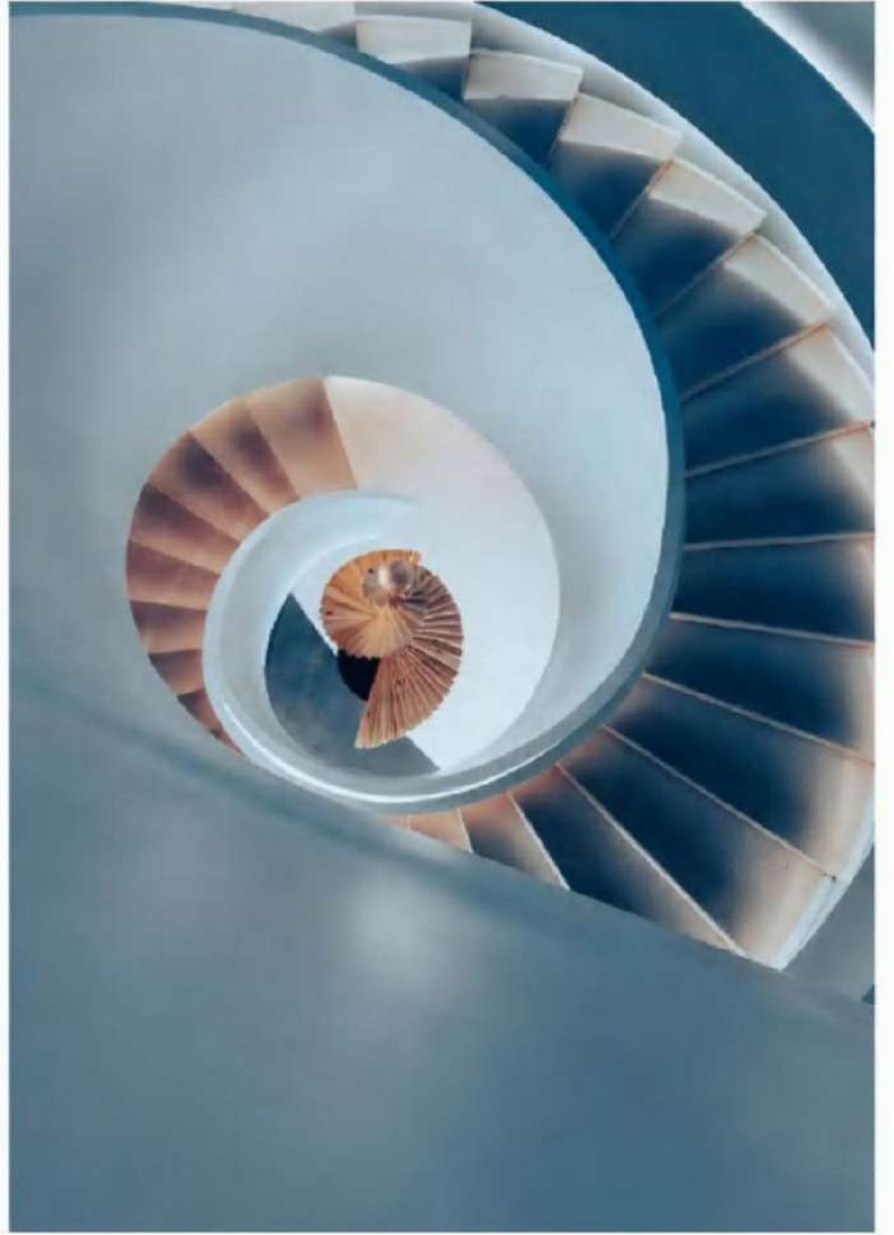




W 501



THE LOVE OF NATURE ALL FEELS FROM THE MATERIAL





BC01

PLACED IN AN ORDERLY MANNER, IT IS
ASYMMETRICAL
ORDER OF ETQUET-TEEN BELLISHED
WITH A
BALANCED SENSE OF BEAUTY GIVING
PEOPLE A SENSE
OF RELAXATION SPIRITUAL SO JOURN.

THE SPIRIT OF CHINESE PEOPLE





THEIR LOVE OF NATURAL LIFE
FROM THE MATERIAL





造物的理,与待人的礼相通,皆关乎尺度的把握。家具的尺度不仅在于高矮长短宽窄厚薄,亦映射着生活中处事接物的分寸理解端坐的体态、躬身的幅度、主宾的次序、相持的距离—礼节经由理性的设计调和,在U墨产品之上达成合宜的克制、情理的兼容。



Refine with and never show off





REFINED IN THE
INSPIRE NEVER PUBLICIZED IS THE INGENUITY
AFTER THE
INSIGHT OF LIFE BUILDS THE HOME WITH LOVE,
CONVEYS CONCRETELY.

WITH THE OPEN AND INCLUSIVE
DESIGN AESTHETICS IN THE CONTEMPORARY CONTEXT





Building new structural forms under the inheritance of spirit and tracing the origin of imagery in shaping.





Through its understanding of Italian aesthetics and Eastern culture, engages in parallel dialogue with current design aesthetics.



PLACED IN AN ORDERLY MANNER, ITS ASYMMETRICAL ORDER OF ETIQUETTE IS BELLSHED WITH A BALANCED SENSE OF BEAUTY GIVING PEOPLE A SENSE OF RELAXATION SPiritual SOJOURN.





THE LOVE OF NATURAL LIFE FROM THE MATERIAL

The warmth of wood, the toughness of metal, and the delicacy of leather. Reflect the spiritual level of Chinese people and their love for natural life through materials.



THE SPIRIT OF CHINESE PEOPLE





The principles of creation and the etiquette of treating people are related to the grasp of scale.

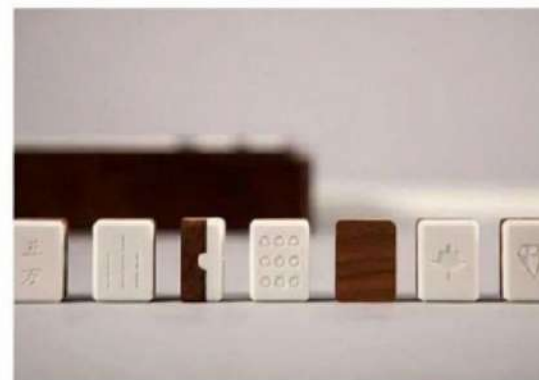
The peace and stability come from every piece of furniture, such as sofas, chairs, tables, or bedrooms. Their same frequency of breath flows and connects in the space, forming a peaceful field.

TRACING BACK TO THE ORIGIN OF
THEM AGAIN THE SHAPING

Etiquette is balanced through rational design,
achieving appropriate restraint and rational compatibility on top of U-ink products



Touching one of them reveals
a subtle understanding,
and entering it brings one to
a tranquil realm.



The warmth of wood,
the toughness of metal



When poetry meets luxury and elegance, it
collides with the fusion of East and West, and
everything is a different answer given by life





Building new structural forms under
the inheritance of spirit and tracing the
origin of imagery in shaping.



AND RETAIN THE
CONTEMPORARY INTERNATIONAL
AESTHETIC INTEREST





Contact Us

India +91 9814200150
China +86 16675791048

Stay Connected

[brixwellgroup](http://brixwellgroup.com)
www.brixwellgroup.com

India Office

6A, Bajaj Colony, Sua Road, Opp. Indian Oil
Gas Station, Throokay, Ludhiana, Punjab -
142002

India Office

6th Floor, Block-5, Wan Yang Industry Area,
Number 2, Huabeo East Road, Longgang
Town, Shunde District, Foshan City,
Guangdong - 528318